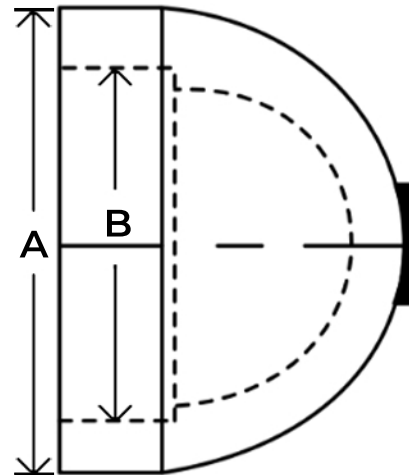
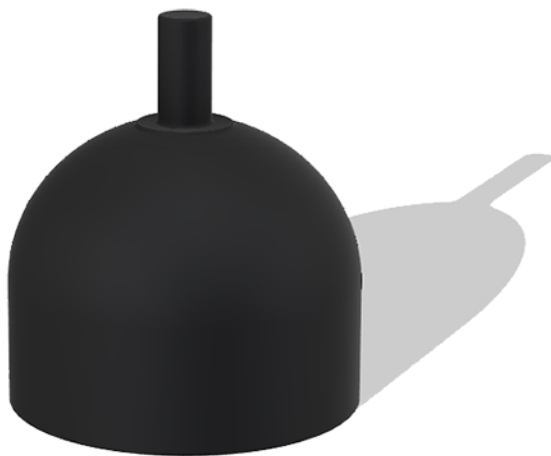


# MOLDED FITTINGS

## Socket fusion | Cap without valve IPS



### PRODUCT 12036

0.75" Ø SDR 11	Size (in)	
	A	B
	1,43	1,02

### PRODUCT 12055

1" Ø SDR 11	Size (in)	
	A	B
	1,85	1,28

### PRODUCT 12021

1.25" Ø SDR 11	Size (in)	
	A	B
	2,25	1,62

The information contained herein is provided without charge or obligation on the part of Sinoco inc. The person having this Information in their possession assumes all responsibility for its use, including ensuring that this technical sheet represents the latest update by contacting Sinoco inc. Sinoco inc. must be informed of any defect or non-conformity of the product before installation. The responsibility of Sinoco Inc. will be limited to the replacement of the nonconforming or defective product.

**LES PRODUITS | PRODUCTS**  
**Sinoco**