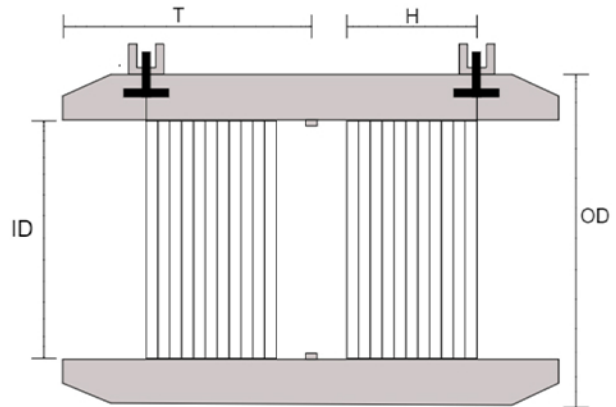
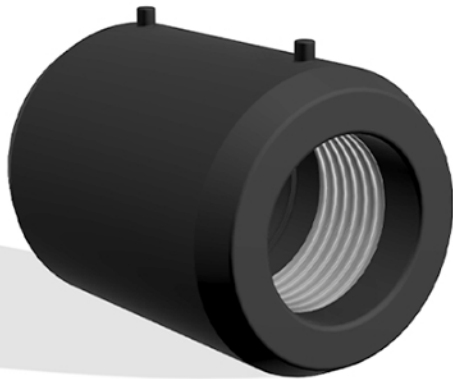


MOLDED FITTINGS

Electrofusion coupling IPS



PRODUCT 18025

| 2" Ø SDR 11 | Size (in) | | | |
|----------------|-----------|------|------|------|
| | T | H | ID | OD |
| | 2,10 | 1,50 | 2,34 | 2,90 |

PRODUCT 18045

| 4" Ø SDR 11 | Size (in) | | | |
|----------------|-----------|------|------|------|
| | T | H | ID | OD |
| | 2,90 | 1,57 | 4,40 | 5,24 |

PRODUCT 18055

| 6" Ø SDR 11 | Size (in) | | | |
|----------------|-----------|------|------|------|
| | T | H | ID | OD |
| | 3,46 | 2,40 | 6,60 | 7,30 |

PRODUCT 18065

| 8" Ø SDR 11 | Size (in) | | | |
|----------------|-----------|------|------|------|
| | T | H | ID | OD |
| | 4,30 | 2,40 | 8,70 | 9,80 |

PRODUCT 18085

| 10" Ø SDR 11 | Size (in) | | | |
|-----------------|-----------|------|-------|-------|
| | T | H | ID | OD |
| | 4,30 | 2,00 | 10,80 | 12,30 |

The information contained herein is provided without charge or obligation on the part of Sinoco inc. The person having this Information in his possession assumes all responsibility for its use, including that of ensuring that this technical sheet represents the latest update by contacting Sinoco inc. Sinoco inc. must be informed of any defect or non-conformity of the product before installation. The responsibility of Sinoco Inc. is limited to the replacement of the nonconforming or defective product.

Sinoco LES PRODUITS | PRODUCTS